

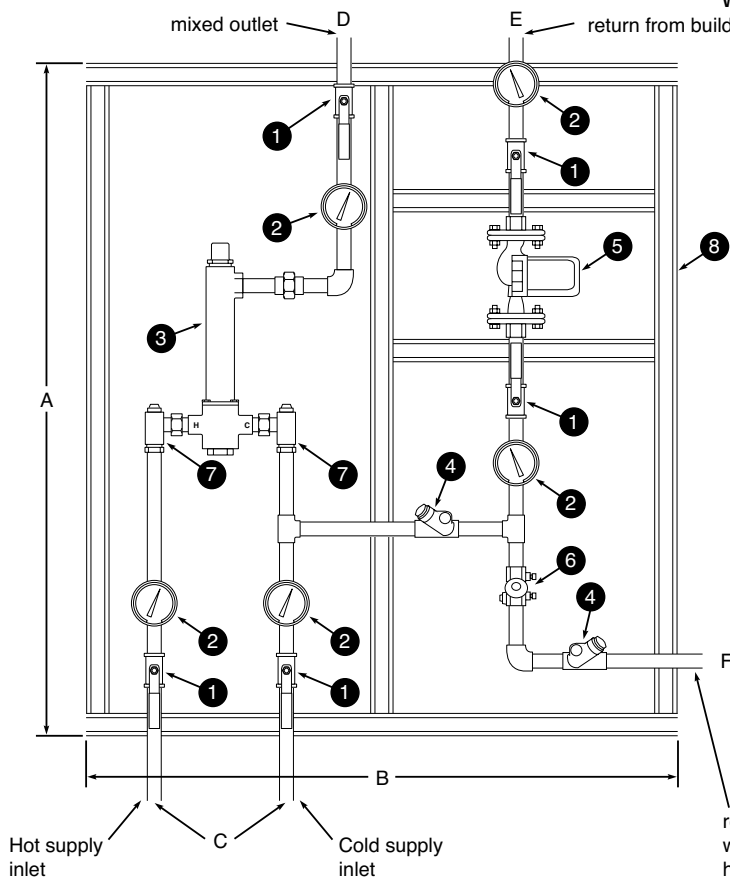
Manifold Recirculation System Prepiped Hi-Low Mixing Valve with Recirculating Pump and Mounting Strut

801, 802, 804 and 805 are  **ASSE 1017 Approved**



Refer to the typical installation shown in the 801, 802, 804 or 805 bulletin. **Certified to CSA B125.3**

- | | |
|----------------------------|------------------------------------|
| 1. Full Port Ball Valve | 5. Recirculation Pump |
| 2. Thermometer | 6. Circuit Setting Balancing Valve |
| 3. Lawler 800 Series Valve | 7. Stop & Check Valve |
| 4. Check Valve | 8. Epoxy-coated Strut |



Master water mixing valve shall be of the thermostatic type with liquid-filled thermal motor. It shall have bronze body construction with replaceable corrosion-resistant components. Valve construction shall employ a sliding piston control mechanism. Sliding piston and liner shall be of stainless steel material. Valve shall come equipped with union end stop and check inlets with removable stainless steel strainers. Valve shall provide protection against hot or cold supply line failure and thermostat failure.

Mixing valve shall be incorporated into a pre-piped manifold system which includes a recirculating pump, circuit setting balancing valve, thermometers, ball valves and mounting strut.

TEMP. RANGE	SET POINT	
70° to 100°F	80°F	<input type="checkbox"/>
90° to 120°F	110°F	<input type="checkbox"/>
110° to 140°F	130°F	<input type="checkbox"/>

Recirculation pipe size _____
 Aquastat (optional) _____
 Recirculation pump _____
 Circulator power switch (optional) _____



MANUFACTURING CO., INC.
 5330 East 25th Street
 Indianapolis, Indiana 46218
 Phone (317) 261-1212
 Fax (317) 261-1208

DIMENSIONS:

A	48"	D	801 1"
B	45"		802 1 1/4"
C	801 3/4"		804 2"
	802 1"		805 2"
	804 1 1/2"	E	To be specified by engineer
	805 2"	F	To be specified by engineer

GPM CAPACITIES - Series 800

Pressure Drop PSI	5	10	20	30	45
Valve Number	Capacity				
801-GPM	17	25	34	40	50
802-GPM	28	39	54	66	80
804-GPM	52	72	100	124	150
805-GPM	64	96	133	165	200

LPM CAPACITIES - Series 800

Pressure Drop PSI	5	10	20	30	45
Valve Number	Capacity				
801-LPM	64	94	128	151	189
802-LPM	106	148	208	247	303
804-LPM	197	273	379	469	568
805-LPM	242	363	503	624	757

Minimum flow is 1/2 gpm when properly installed.

Specification subject to change without notice.