


# Manifold Recirculation System Prepiped Hi-Low Mixing Valve with Dual Temperature Returns on Mounting Strut

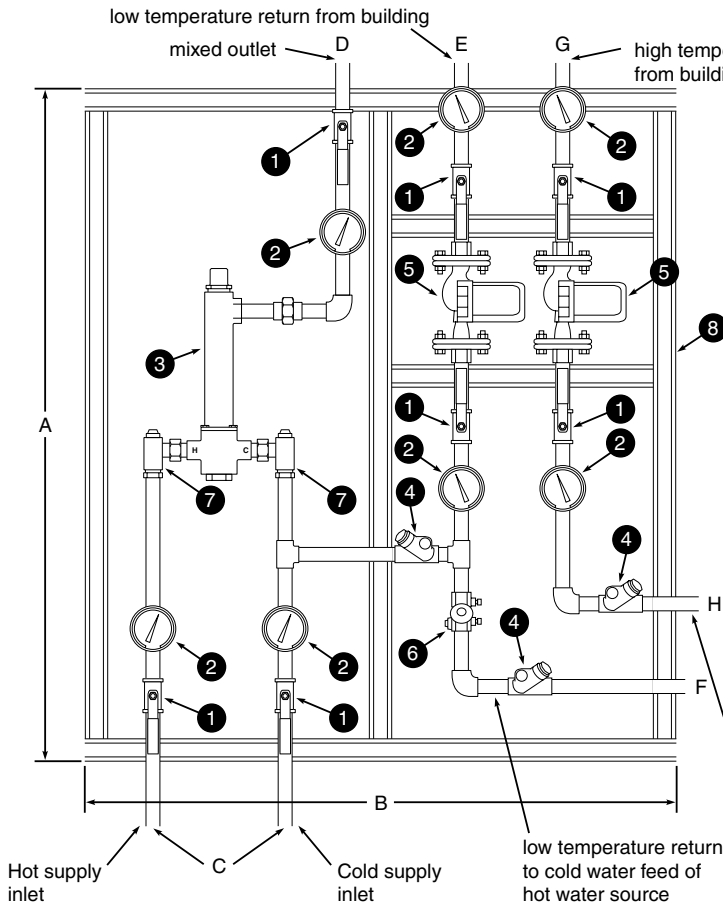
801, 802, 804 & 805 are  **ASSE 1017 Approved**



**Certified to CSA B125.3**

Refer to the typical installation shown in the 801, 802, 804 or 805 bulletin.

- |                            |                                    |
|----------------------------|------------------------------------|
| 1. Full Port Ball Valve    | 5. Recirculation Pumps             |
| 2. Thermometer             | 6. Circuit Setting Balancing Valve |
| 3. Lawler 800 Series Valve | 7. Stop & Check Valve              |
| 4. Check Valve             | 8. Epoxy-coated Strut              |



Master water mixing valve shall be of the thermostatic type with liquid-filled thermal motor. It shall have bronze body construction with replaceable corrosion-resistant components. Valve construction shall employ a sliding piston control mechanism. Sliding piston and liner shall be of stainless steel material. Valve shall come equipped with union end stop and check inlets with removable stainless steel strainers. Valve shall provide protection against hot or cold supply line failure and thermostat failure.

Mixing valve shall be incorporated into a pre-piped manifold system which includes dual temperature return lines.

| TEMP. RANGE   | SET POINT |                          |
|---------------|-----------|--------------------------|
| 70° to 100°F  | 80°F      | <input type="checkbox"/> |
| 90° to 120°F  | 110°F     | <input type="checkbox"/> |
| 110° to 140°F | 130°F     | <input type="checkbox"/> |

- Low temp recirculation pipe size \_\_\_\_\_
- High temp recirculation pipe size \_\_\_\_\_
- Aquastat \_\_\_\_\_
- Low temp recirculation pump spec \_\_\_\_\_
- High temp recirculation pump spec \_\_\_\_\_
- Test connection and circulator power switch (optional) \_\_\_\_\_

**DIMENSIONS:**

|          |            |            |                             |
|----------|------------|------------|-----------------------------|
| <b>A</b> | 48"        | <b>D</b>   | 801 1"                      |
| <b>B</b> | 45"        |            | 802 1 1/4"                  |
| <b>C</b> | 801 3/4"   |            | 804 2"                      |
|          | 802 1"     |            | 805 2"                      |
|          | 804 1 1/2" | <b>E-H</b> | To be specified by engineer |
|          | 805 2"     |            |                             |

**GPM CAPACITIES – Series 800**

| Pressure Drop PSI   | 5               | 10 | 20  | 30  | 45  |
|---------------------|-----------------|----|-----|-----|-----|
| <b>Valve Number</b> | <b>Capacity</b> |    |     |     |     |
| <b>801-GPM</b>      | 17              | 25 | 34  | 40  | 50  |
| <b>802-GPM</b>      | 28              | 39 | 54  | 66  | 80  |
| <b>804-GPM</b>      | 52              | 72 | 100 | 124 | 150 |
| <b>805-GPM</b>      | 64              | 96 | 133 | 165 | 200 |

**LPM CAPACITIES – Series 800**

| Pressure Drop PSI   | 5               | 10  | 20  | 30  | 45  |
|---------------------|-----------------|-----|-----|-----|-----|
| <b>Valve Number</b> | <b>Capacity</b> |     |     |     |     |
| <b>801-LPM</b>      | 64              | 94  | 128 | 151 | 189 |
| <b>802-LPM</b>      | 106             | 148 | 208 | 247 | 303 |
| <b>804-LPM</b>      | 197             | 273 | 379 | 469 | 568 |
| <b>805-LPM</b>      | 242             | 363 | 503 | 624 | 757 |

Minimum flow is 1/2 gpm when properly installed.

Specification subject to change without notice.



**MANUFACTURING CO., INC.**  
5330 East 25th Street  
Indianapolis, Indiana 46218  
Phone (317) 261-1212  
Fax (317) 261-1208